

Appendix 3. Graphical representations of relationships between anthropogenic disturbance variables and duck populations from Tables 2 – 6 for each type of landscape.

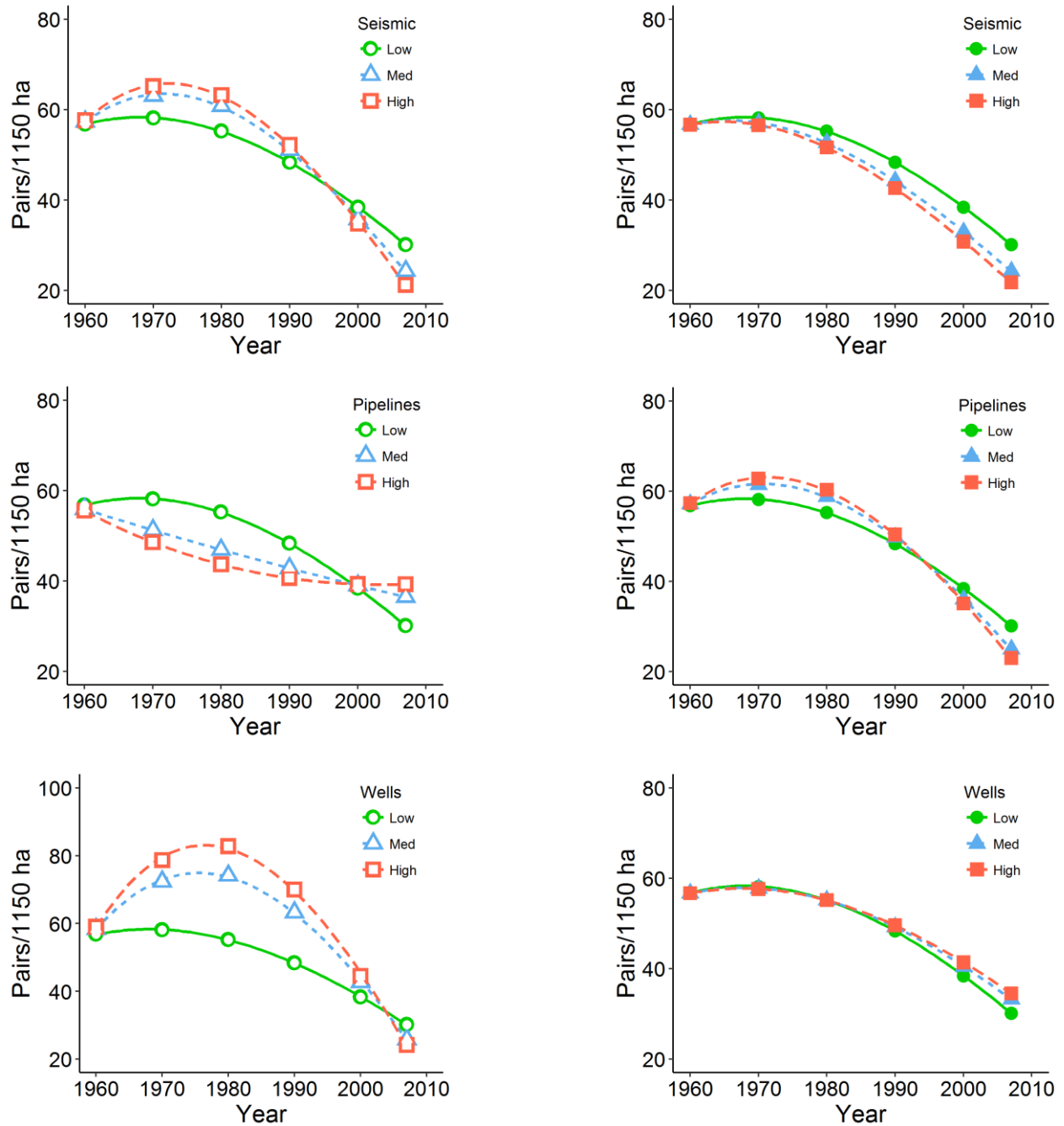


Figure A3.1. Relationships between density of anthropogenic disturbances and trends in ground nesting duck pair density, 1960 – 2007. Open circles- agriculture encroached landscape, close circles – unencroached landscape. Low, medium, high or close, near, far correspond to 25th, 50th, and 75th percentiles. No relationship with landscape was observed for roads.

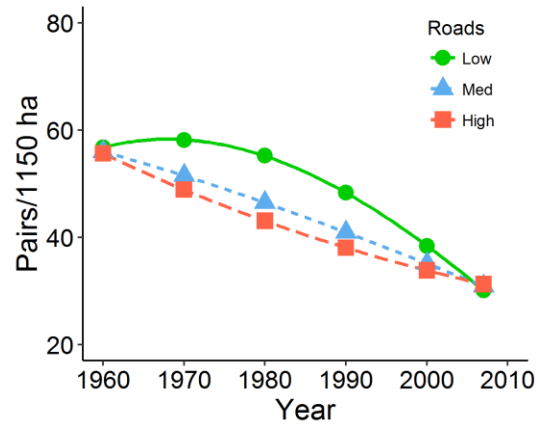


Figure A3.1 cont.

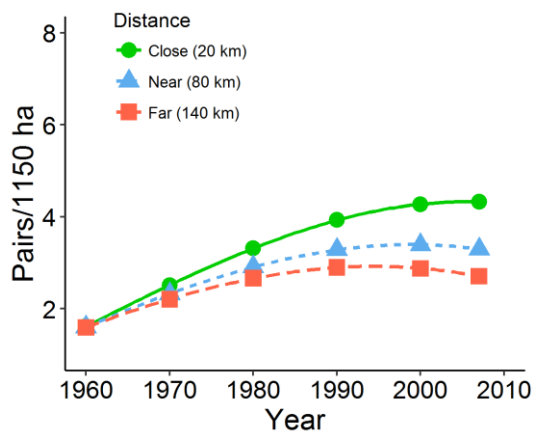
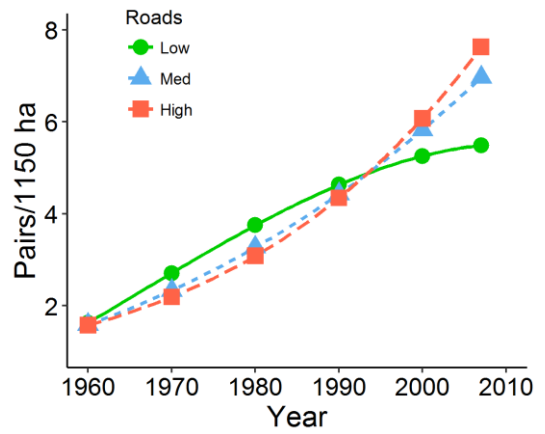
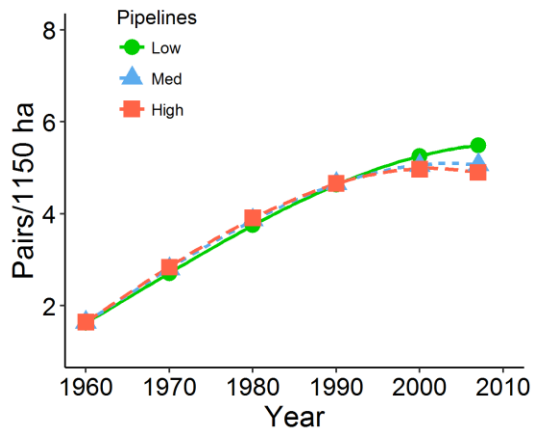


Figure A3.2. Relationships between density of anthropogenic disturbances or distance to agriculture and trends in cavity nesting duck pair density, 1960 – 2007. Low, medium, high or close, near, far correspond to 25th, 50th, and 75th percentiles. No relationship with landscape was observed.

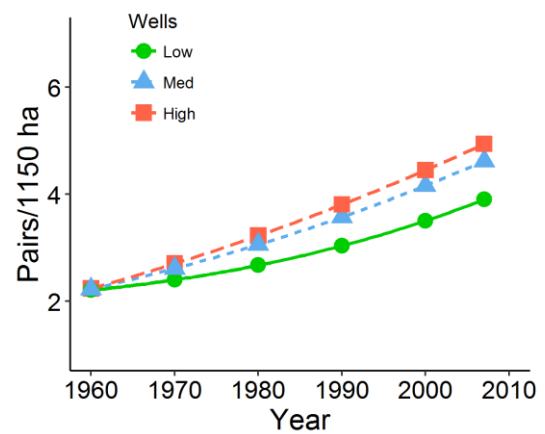
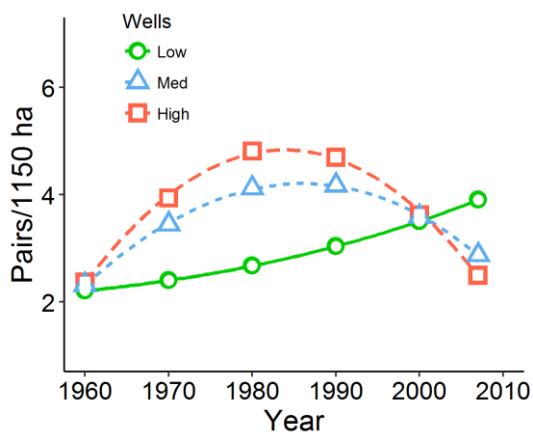
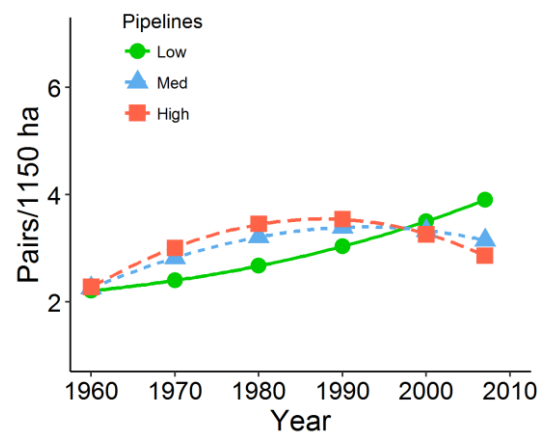
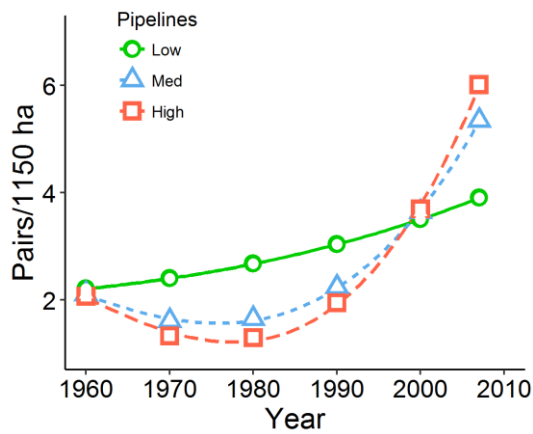
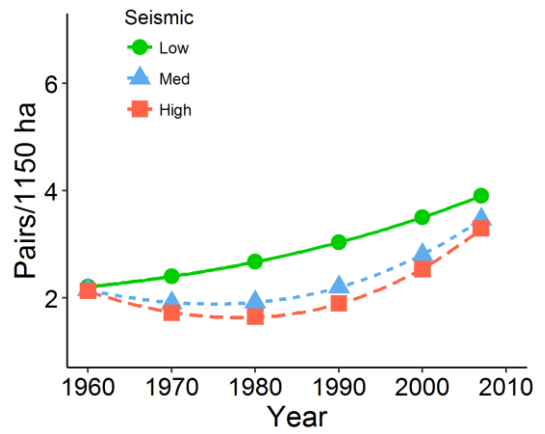
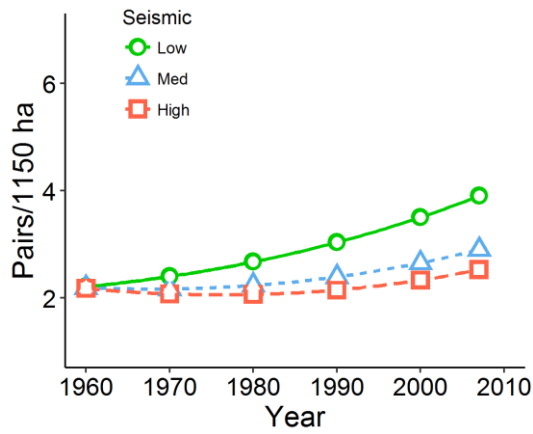


Figure A3.3. Relationships between density of anthropogenic disturbances or distance to agriculture and trends in overwater nesting duck pair density, 1960 – 2007. Open circles-agriculture encroached landscape, close circle – unencroached landscape. Low, medium, high or close, near, far correspond to 25th, 50th, and 75th percentiles.

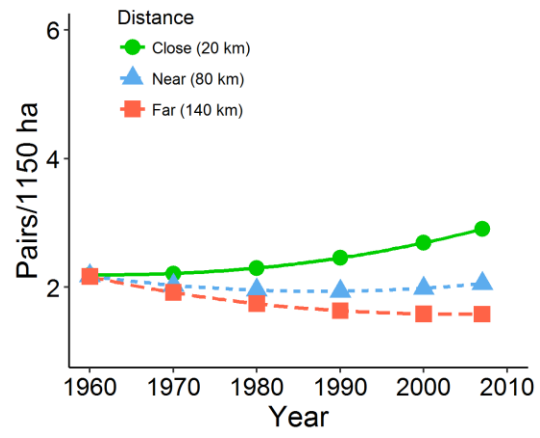


Figure A3.3 cont.