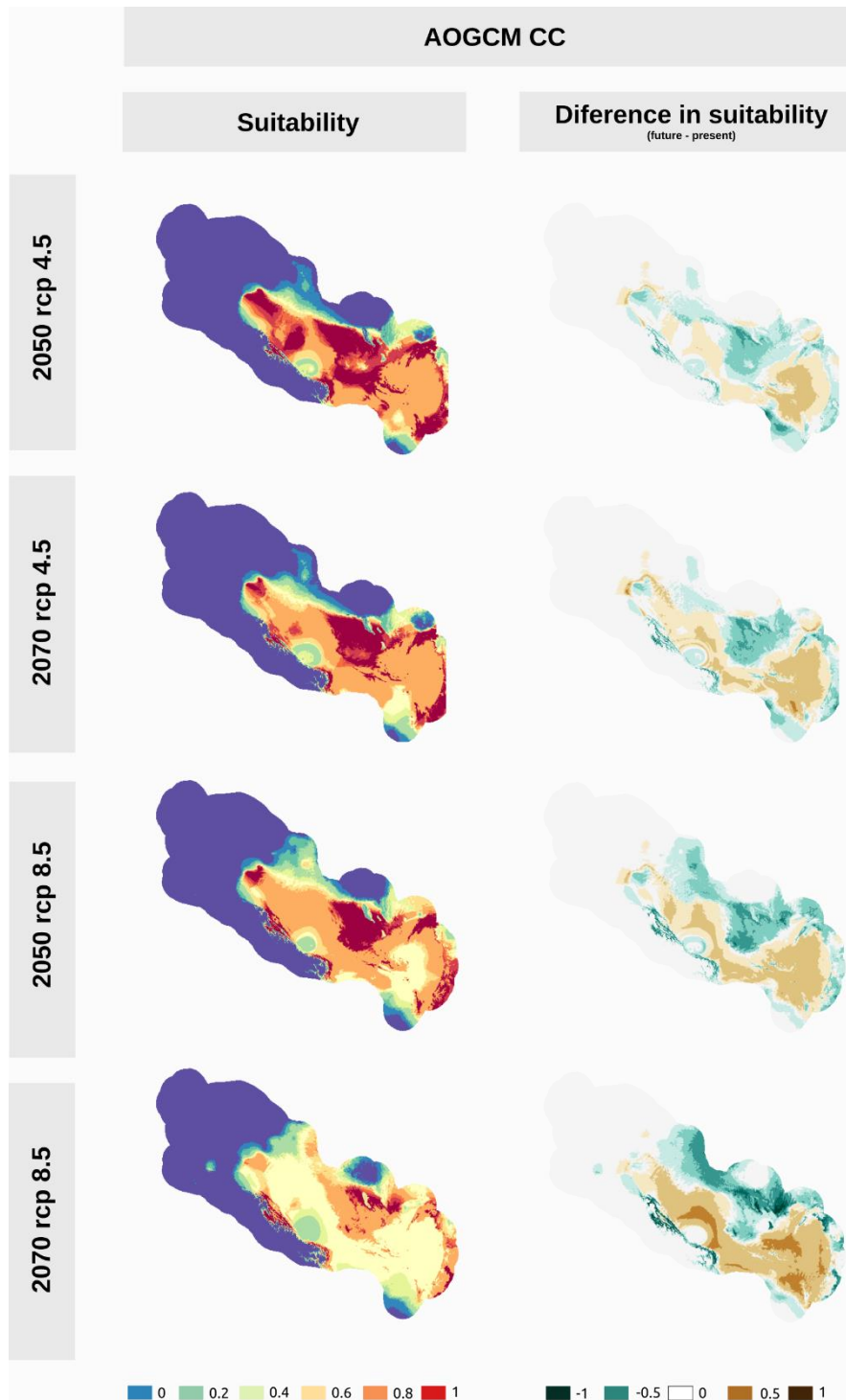


Appendix 6

Fig.A6.6: Potential distribution maps of Mato Grosso Antbird suitability in different climate scenarios (year 2050, year 2070) for each different global circulation models CCSSM4, MIROC and MRI. (RCP: Representative Concentration Pathway).

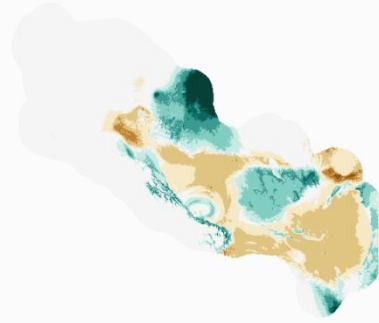
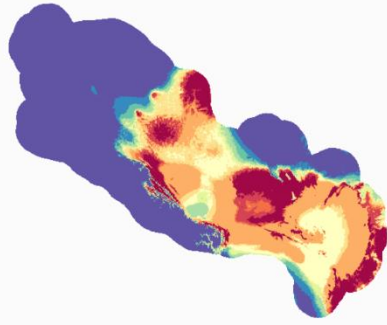


AOGCM MIROC

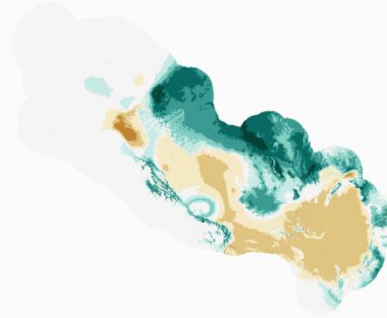
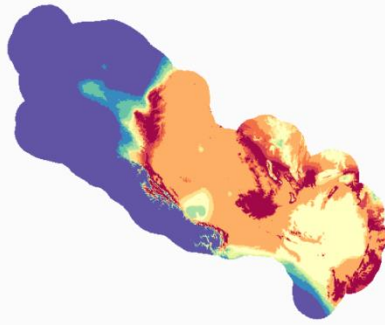
Suitability

Diference in suitability
(future - present)

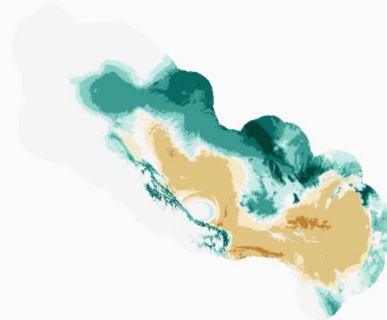
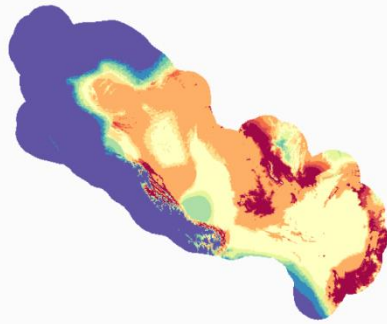
2050 rcp 4.5



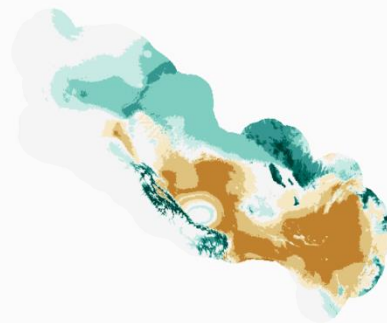
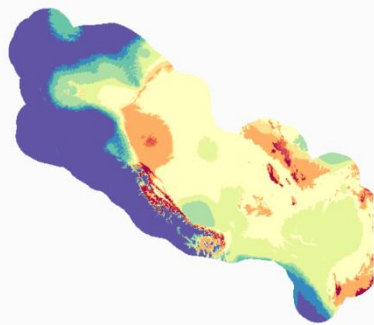
2070 rcp 4.5



2050 rcp 8.5



2070 rcp 8.5

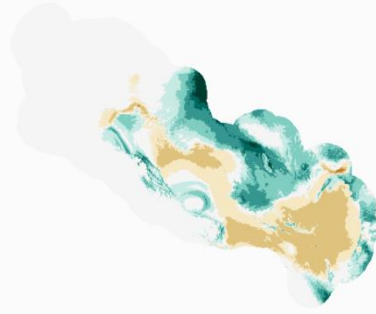
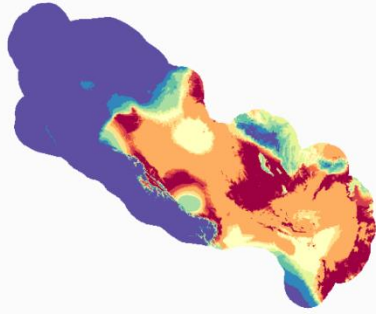


AOGCM MRI

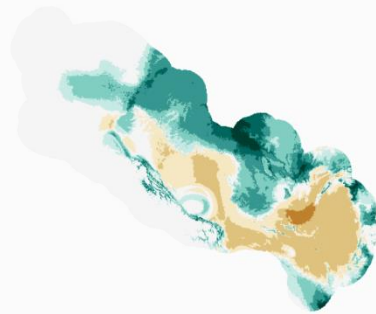
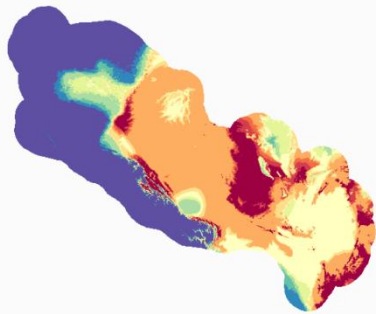
Suitability

Diference in suitability
(future - present)

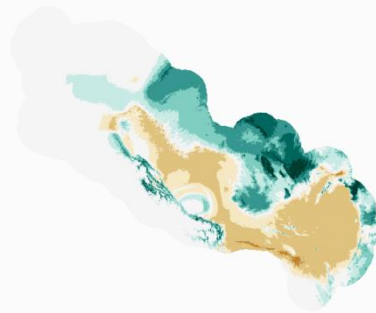
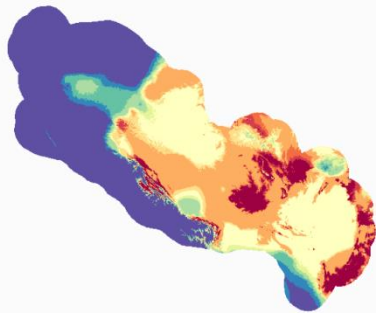
2050 rcp 4.5



2070 rcp 4.5



2050 rcp 8.5



2070 rcp 8.5

